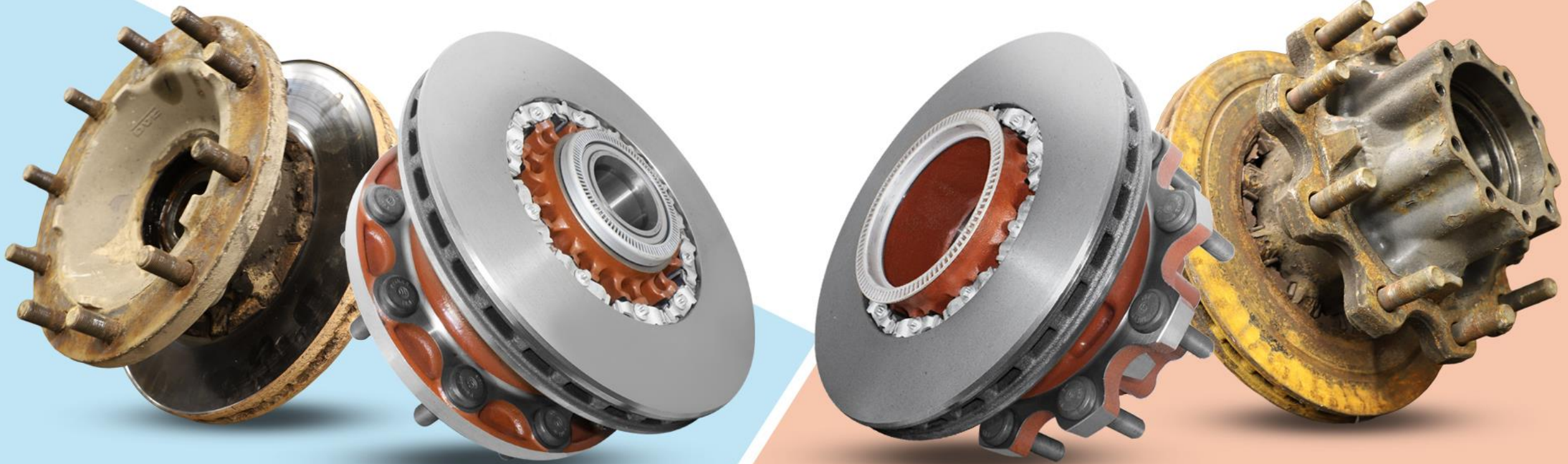


DAF WHEEL HUB REBATE CRITERIA

— APPROVED & REJECTED CONDITIONS GUIDE —





Identification Criteria (Approved)

Hub type approval requirements.



Identification Criteria (Not Approved)

Hub type rejected criteria.



Internal parts Criteria

Assessment standards for bearings & seals.



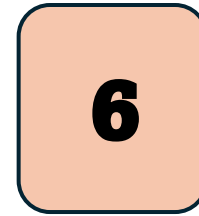
External parts Criteria

External condition requirements for parts.



Half shaft seating area Criteria

Inspection points for wear & damage.



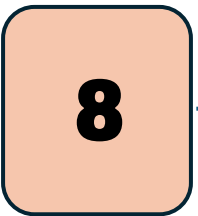
Wheel location spigots criteria

Standards for spigot conditions.



Wheel stud holes Criteria

Assessment for stud hole wear, elongation and damage.



General wear & tear Criteria

Acceptable cosmetic and operational guidelines.

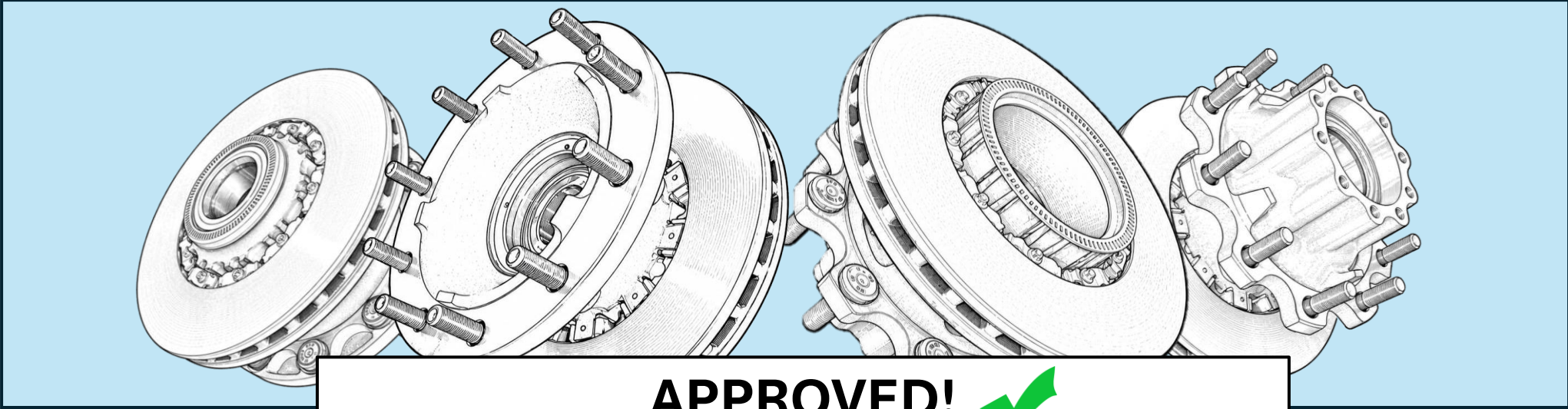


Major Damage Criteria

Critical Damage thresholds resulting in rejection.

STANDARD DISC TYPE FRONT & REAR WHEEL HUBS

1.



APPROVED! ✓

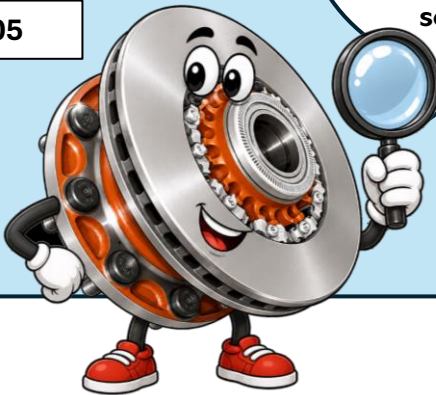
DAF hubs **INCLUDED** in the scheme

- DAF00004
- DAF00005
- DAF00006
- DAF00007
- DAF00009
- DAF00020
- DAF00022

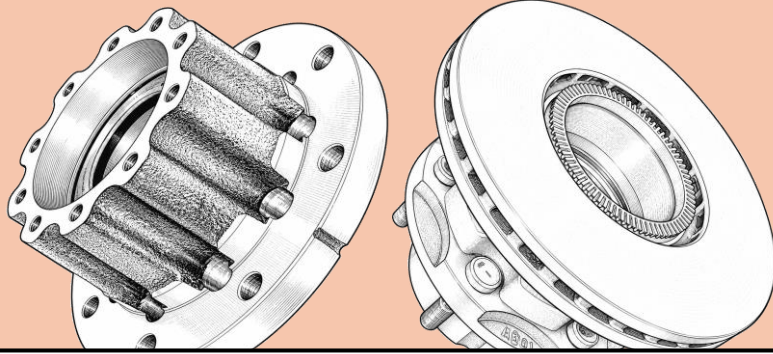
Typically found in models

- LF55
- XF105
- XF95
- CF

If you know our part numbers, great! If not, don't worry. You can simply click each part number to see examples!

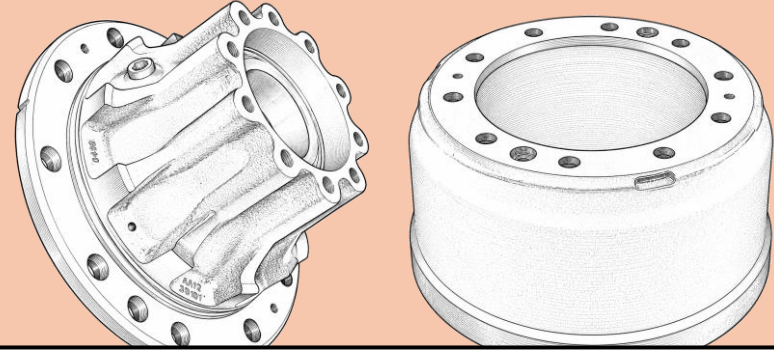


ALL **LF** TYPE DAF HUBS



NOT APPROVED! ❌

ALL **DRUM** TYPE DAF HUBS

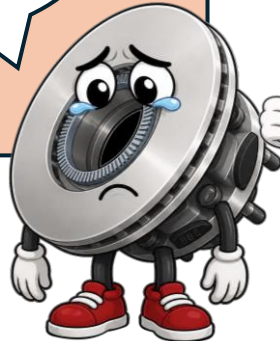


NOT APPROVED! ❌

LF type hubs **NOT INCLUDED** in the scheme

- DAF00008
- DAF00011
- DAF00012
- DAF00014
- DAF00018
- DAF00019
- DAF00023

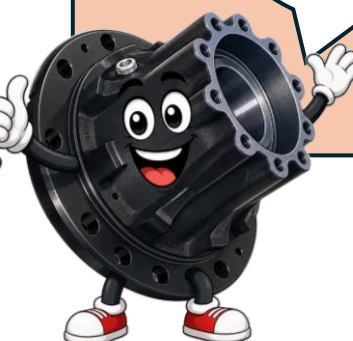
Sadly, not every hub is part of our rebate scheme...



DRUM type hubs **NOT INCLUDED** in the scheme

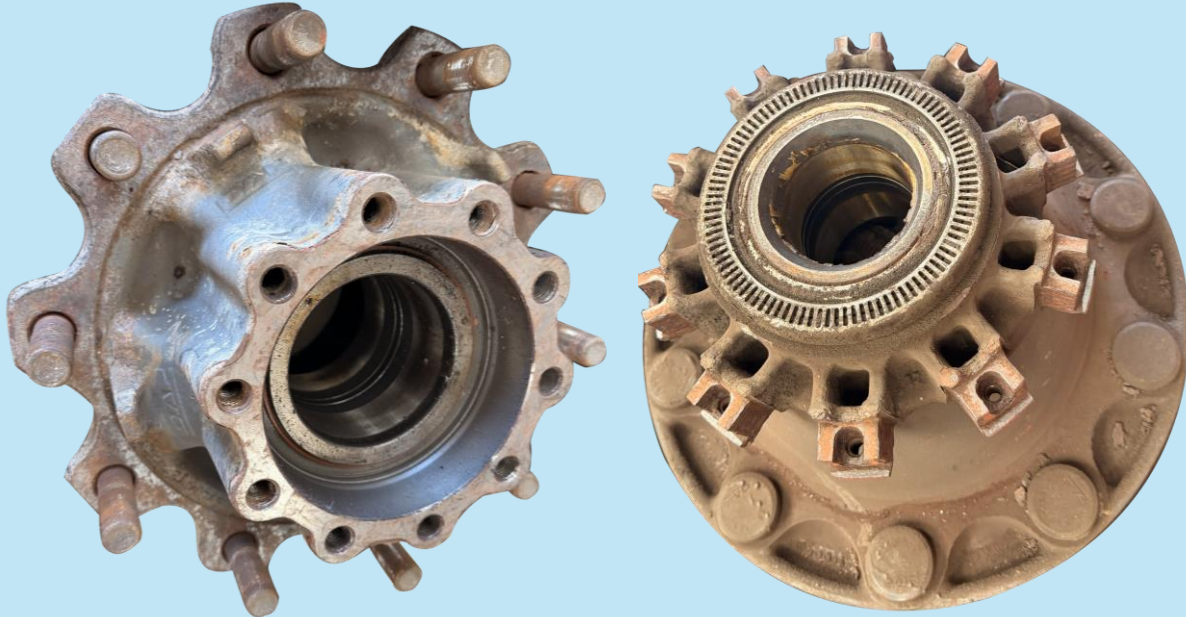
- DAF00003
- DAF00010
- DAF00021

But don't fret, our competitive prices & sure-fire quality means you are already onto winner!



INTERNAL PARTS CRITERIA:

Complete wheel hub with both inner
and outer bearings fitted

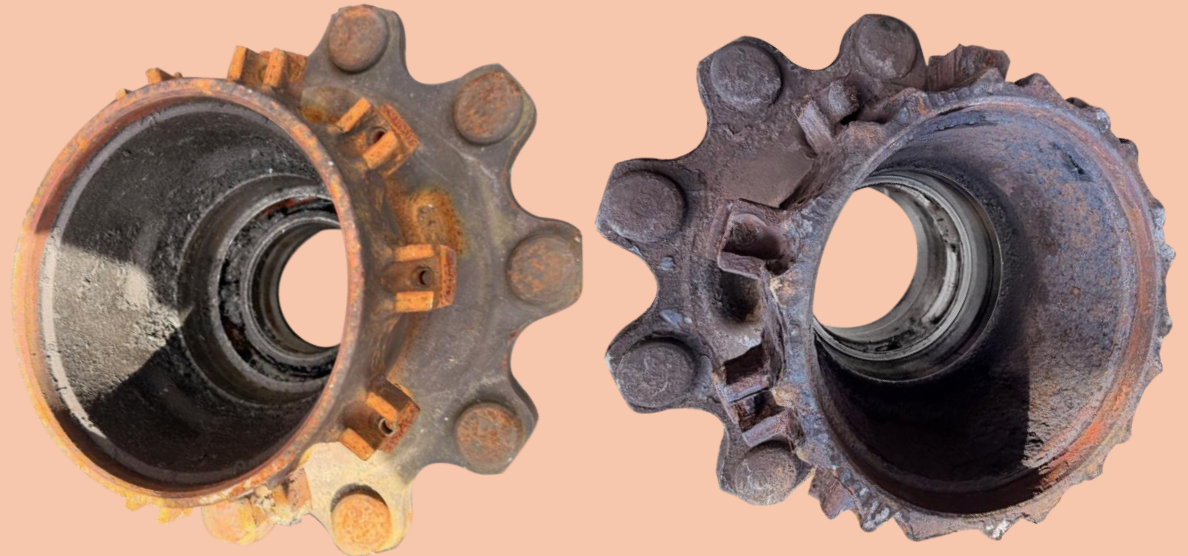


APPROVED! ✓

- Wheel hub with one bearing missing

- Missing seals

- Both bearings missing



NOT APPROVED! ✗

EXTERNAL PARTS CRITERIA:

Complete hub kit

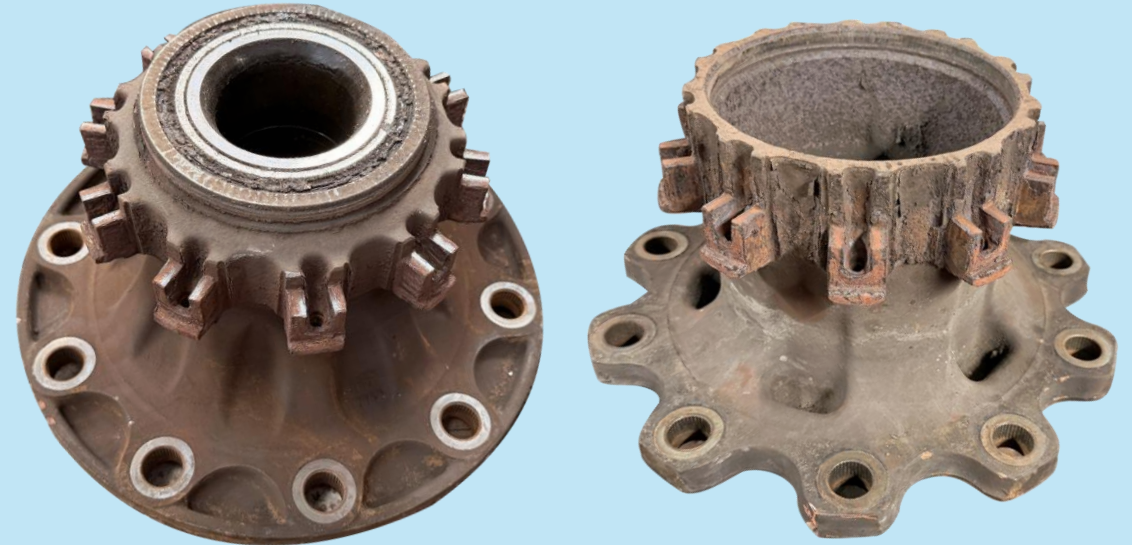
- Brake disc fitted
- Hub cap attached
- ABS ring fitted
- Wheel nuts attached
- Wheel studs fitted



APPROVED! ✓

Wheel hub & Bearing

- Wheel hub with all external parts removed



APPROVED! ✓

HALF SHAFT SEATING AREA:

Small / light scuffs & marks

Clean & undamaged surface



APPROVED! ✓

- Surface deformities in the seating area

- Gouges in or around the seating area



NOT APPROVED! ✗

WHEEL LOCATION SPIGOTS CRITERIA:

- Rust/Corrosion build-up
- Small indentations

- Damaged caused by a loose wheel
- Sheared spigots



APPROVED! ✓



NOT APPROVED! ✗

WHEEL STUD HOLES CRITERIA:

Circular indentations

Rust/corrosion build-up



APPROVED! ✓

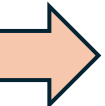
- Damage caused by a spun wheel stud

- Gouges in or around the wheel stud hole

- Wheel stud hole deformities



NOT APPROVED! ✗



GENERAL WEAR & TEAR CRITERIA:

- Rust , Dirt, Corrosion build-up on the casting

- Slightly loose brake disc

- Small indentations on the hub casting

- Worn or damaged ABS ring

- Worn or damaged brake disc



APPROVED! ✓

MAJOR DAMAGE (INTERNAL & EXTERNAL) CRITERIA:

- Brake disc seating lugs damaged or missing
- Severe damages to the casting
- Damage to the ABS seating area
- Collapsed or spun wheel bearing



NOT APPROVED! ❌